

# THE COMMERCIAL PORT OF LONGONI – MAYOTTE

--YTLO--

Mozambique Channel

STEVEDORE & AGENT : MANU-PORT sarl

PORT OPERATOR : MCG sas (mother company)



January 2020





# SUMMARY

Port advantages

P4

Key figures

P5

Port opportunities

P6

Global layout of piers

P7

Two main projects

P8

Port organization plan

P9

- Quay 1
- Quay 2
- Quay 2 – extension
- Mozambique platform

Port facilities

P14

Quay operations

P15

Port equipments

P16

- Harbour mobile cranes
- RTG –tyre mobile gantry cranes
- Handling equipments

Terminal operating system

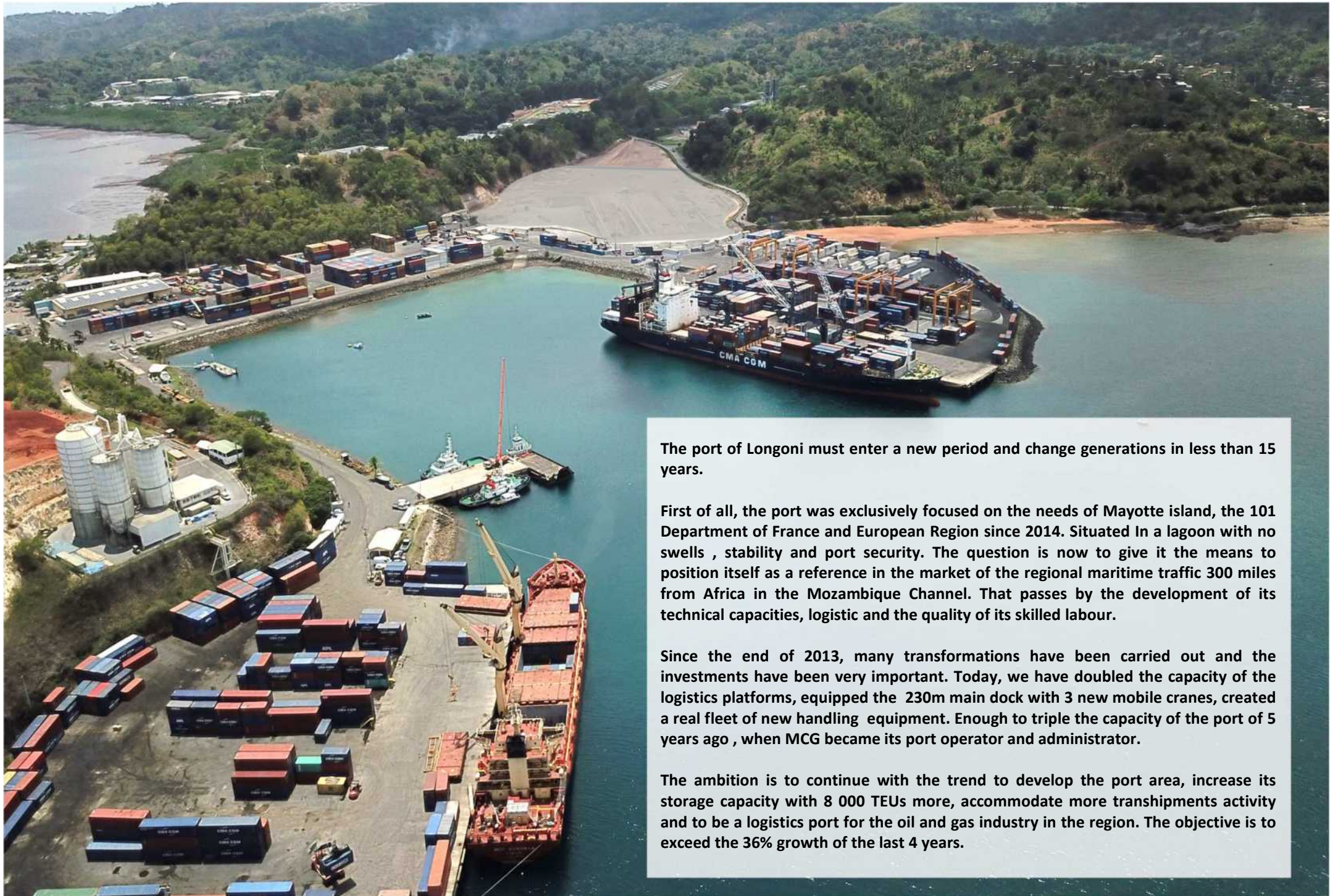
P19

Shipp services

P20







The port of Longoni must enter a new period and change generations in less than 15 years.

First of all, the port was exclusively focused on the needs of Mayotte island, the 101 Department of France and European Region since 2014. Situated In a lagoon with no swells , stability and port security. The question is now to give it the means to position itself as a reference in the market of the regional maritime traffic 300 miles from Africa in the Mozambique Channel. That passes by the development of its technical capacities, logistic and the quality of its skilled labour.

Since the end of 2013, many transformations have been carried out and the investments have been very important. Today, we have doubled the capacity of the logistics platforms, equipped the 230m main dock with 3 new mobile cranes, created a real fleet of new handling equipment. Enough to triple the capacity of the port of 5 years ago , when MCG became its port operator and administrator.

The ambition is to continue with the trend to develop the port area, increase its storage capacity with 8 000 TEUs more, accommodate more transhipments activity and to be a logistics port for the oil and gas industry in the region. The objective is to exceed the 36% growth of the last 4 years.



## Port advantages

- **Natural deep port**  
Draft : 14.5 m QUAY 2
- **Can take vessels up to 6000 TEUs**
- **Port non congested**
- **ISPS port**
- **European & french port standards**
- **Good standard of productivity**
- **In lagoon no swells**
- **Acces to harbour : 24 /7**
- **Lagoon entrance 45 mn away**



- **Many ongoing projects**
- **Land reserves**



**KEY FIGURES**

Port non congested  
Quay occupancy 40 %

Productivity  
14 – 18  
Moves / crane / hour

MERCHANT  
CARRGO  
VESSELS ALL  
CATEGORIES :  
206

CONTAINERS  
IMPORTS  
FCL  
21 000 TEUs

TRANSHIPMENT  
FCL  
44 000 TEUs

The container sector  
shows an increase of  
36,5 % since 2014.

Transshipment  
contribute as an  
important growth  
factor



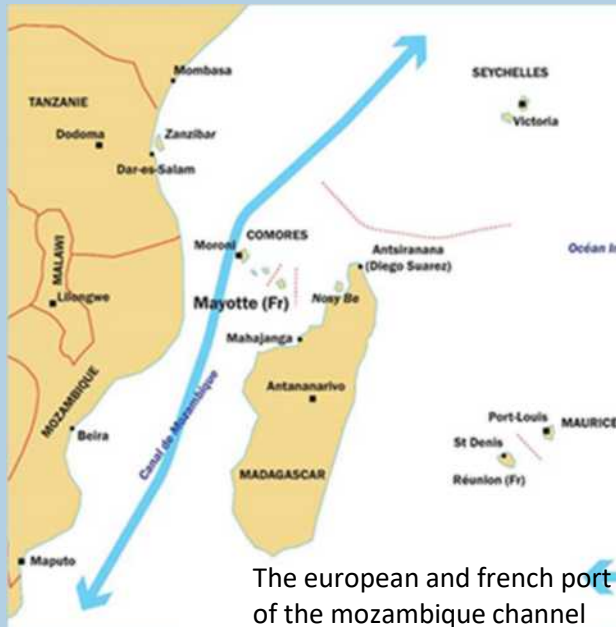
**TOTAL TRAFFIC / 1 110 000 TONS**

TRAFFIC  
GROWTH  
+ 60 %  
between  
2013 and  
2019

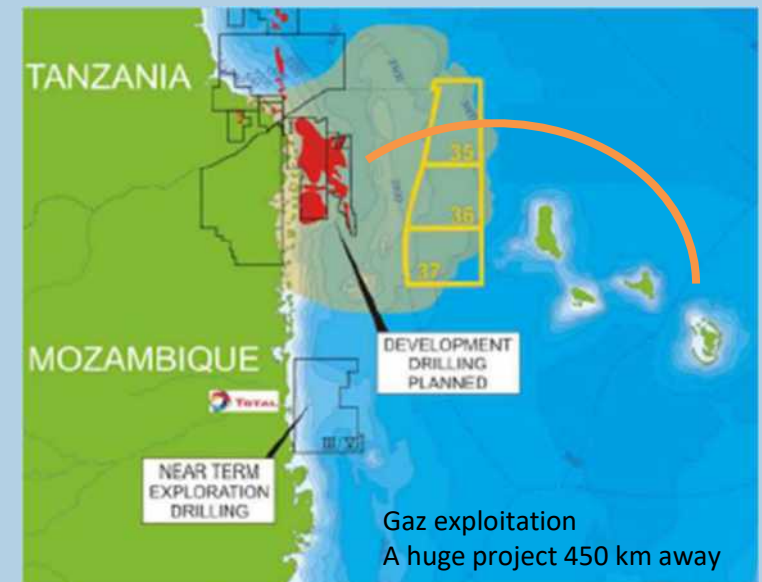
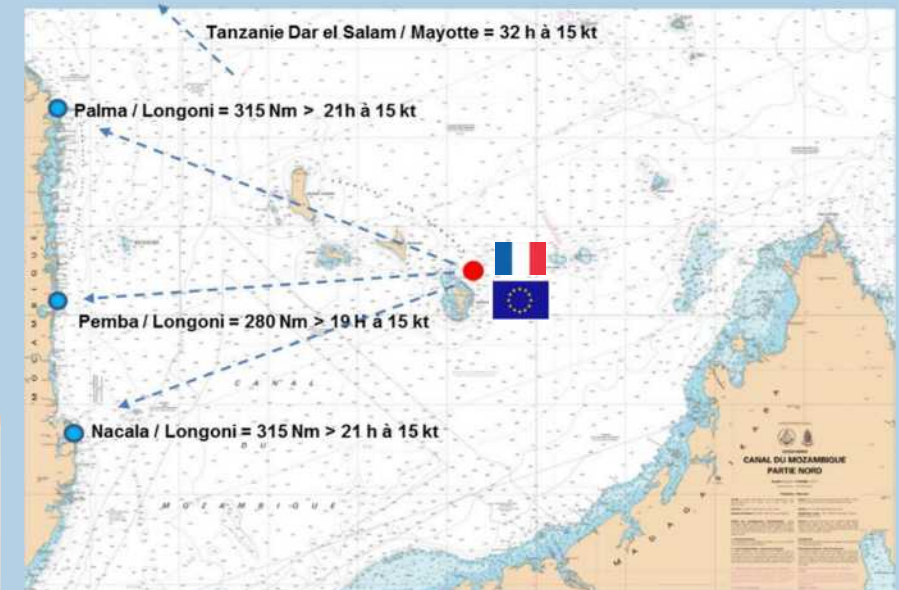
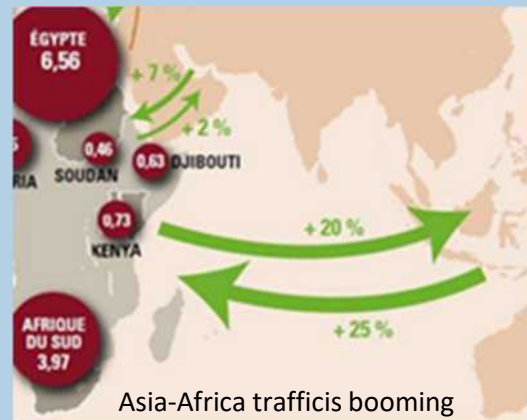


## Port opportunities

Due to our location in the middle of the Mozambique canal, with french and european status, the developpement in progress with enlarged our ambition to position the port of Longoni as a regional crossroad and hub.

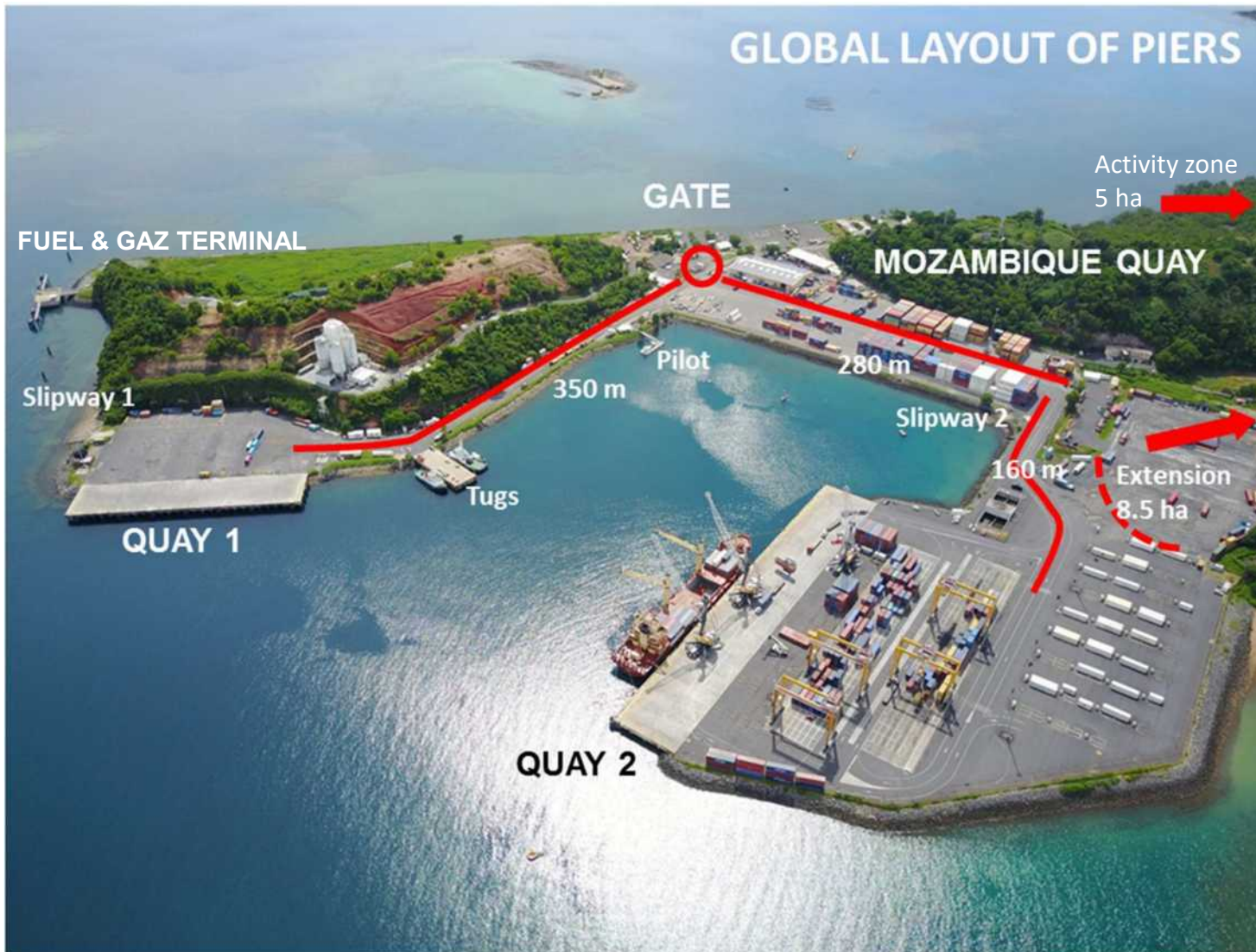


To MOMBASA : 648 nm  
 To DAR ES SALAAM : 485 nm  
 To NOSY BE : 162 nm  
 To the SEYCHELLES : 756 nm  
 To the RÉUNION ISLAND : 750 nm  
 To MAURITIUS : 810 nm  
 To ARABIAN PENINSULA & INDIA : 2160 nm  
 To DURBAN : 1295 nm



The port has almost 15 hectares of platforms soon 19 with extensions underway.

Two quays : QUAY 1 / 130m (draft 9.5m) and QUAY 2 / 223m (draft 14m) will be completed by a new quay (250m-draft 7.5m) to be built in the dock. A 270 m floating wharf associated with the platform of QUAY 2 is on study.



Extension of the West platform  
8.5 Ha



## Two main projects

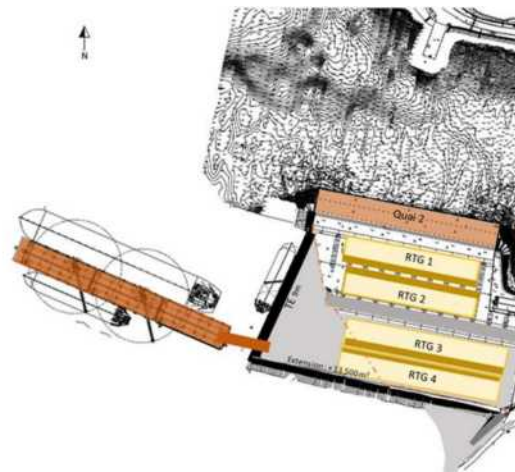
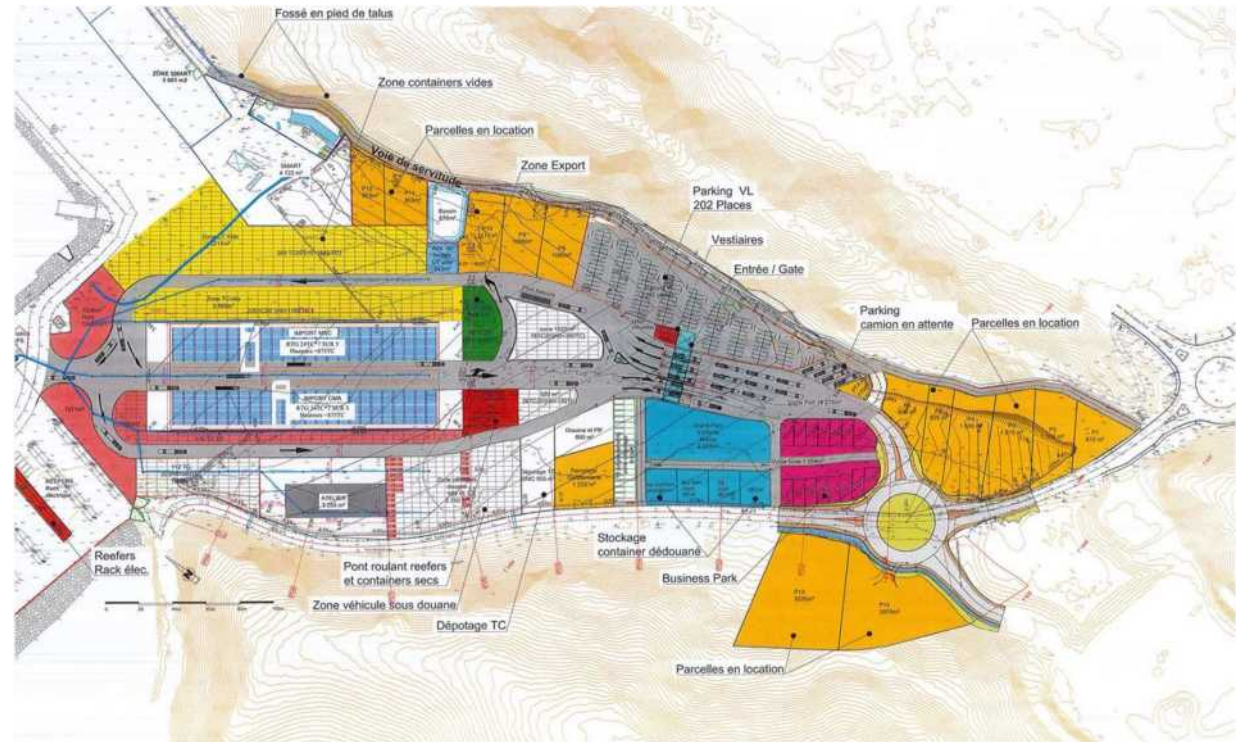
The main focus was to reorganise the existing infrastructures and develop new logistic platforms.

The combined investment in port handling equipment and the extension of new logistics platforms (+ 8.5 ha) tripled the port capacity since 2013.

Another impérative was to implement port security to comply to the ISPS standard.

In 2020, with 4 new mobile gantry cranes (RTG), the storage capacity underneath RTG will be 7000 TEUs.

A floating dock project (275ml) is under study. It could accommodate ships up to 6000 TEUs and two ships simultaneously.





## Port organization plan





## Port organization plan

**QUAY 1**

Priority for bulk and conventional  
11.000 m<sup>2</sup>

LAFARGE ciment silos on site

Yard A19: import

Storage capacity : 240 TEUs

Yard A20: MD hazardous cargos

Storage capacity : 90 TEUs

Yard A33: various Storage capacity :  
248

Slipway on north side





## Port organization plan

## QUAY 2

Storage under neath RTG Yard A02 :  
transhipment Storage capacity : 875  
TEUS Yard A03 : FCL  
Storage capacity : 875 TEUS

Yard A22 : flatsracks Storage capacity :  
44 Yard A05 : Reefers  
Storage capacity : 236 reefers Yards  
A06-A23-A24 > A28 : empty  
containers  
Storage capacity : 1000 TUEs  
Yard A34 : empty reefers Storage  
capacity : 200





## Port organization plan

## Storage underneath RTG

Yard A09 : Storage of 40'' FCL imports

Storage capacity : 875 TEUS

Yard A10 : Storage empty containers

Storage capacity : 875 TEUS

Yard A40 : Storage empty containers

Storage capacity : 770 TEUS





## Port organization plan

Mozambique platform 3,2 ha

Yard A11 : containers 20 ft for delivery

Storage capacity : 360 TUES

Yard A31 : storage area for delivery D+1

Storage capacity : 66 TUES

Yard A32 :  
Storage capacity : 960 TUES

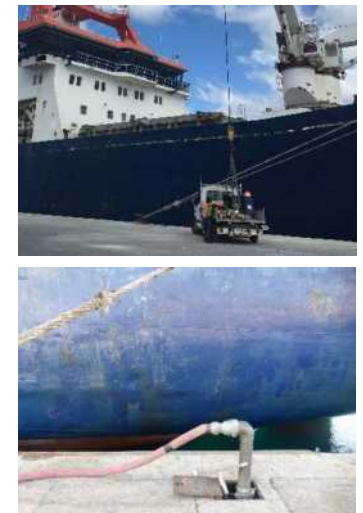
Under custom's warehouse : 1300 m<sup>2</sup>





## Port facilities

The MAINTENANCE workshop for all Equipment  
30 machines : cranes and handling equipment

REEFER AND DRY  
Container cleaning station



## Quay operations

Operations Working Hours.

2 Shifts of 7 hours each

:- 7,30 a.m.> 9,30 p.m.

3 rd 7hr Night shift possible (on overtime basis)

Terminals occupancy rate 40% approx . 200

ships per year





## Port equipments

**HARBOUR MOBILE CRANES**

GRUES LIEBHERR LHM 420

**3**

Mobile cranes

Liner Post panamax &lt; 16 rows of containers

Weight : 395 tons Tower: 32,8 m

Capacity : 124 tons at 19 m / 38.8 tons at 48 m

Capacity of transhipment : 16 à 22 containers / hour

Spreaders

Bromma semi-automatic / capacity : 52tons

Twin-lifts / capacity : 50 tons

Manual spreader ; capacity : 45 tons





## Port equipments

**RTG –TYRE MOBILE GANTRY CRANES**RTG LIEBHERR  
LCC 4494**4**

YEAR 2020 – 4 MORE will be Installed

Storage capacity : 875 TEUs Each  
5 high / 7 wide + truck lineSelf weight : 138 t Gantry span : : 26.45m  
Lifting height : 18.10m



## Port equipments

**HANDLING EQUIPMENT**

Stackers TEREX	5
Stackers LIEBHERR	3
Trailors + trailers TERBERG Empty	6/8
handlers KALMAR	4





## Port equipments

**TERMINAL OPERATING SYSTEM (TOS)**

**The NAVIS COMPUTER SYSTEM,**  
MCG's logistics management controlling tool.

The program is used simultaneously by the ship planners, the logistics control center of the yard, the Gate for BILLING which have all the management resources, and the handling machines on the platforms.





## SHIP services

**PORT OPEN**

24/24 7 days a week

**PILOT BOATS**

2 Vessels

**OPERATED BY MCG :****TUG BOATS**

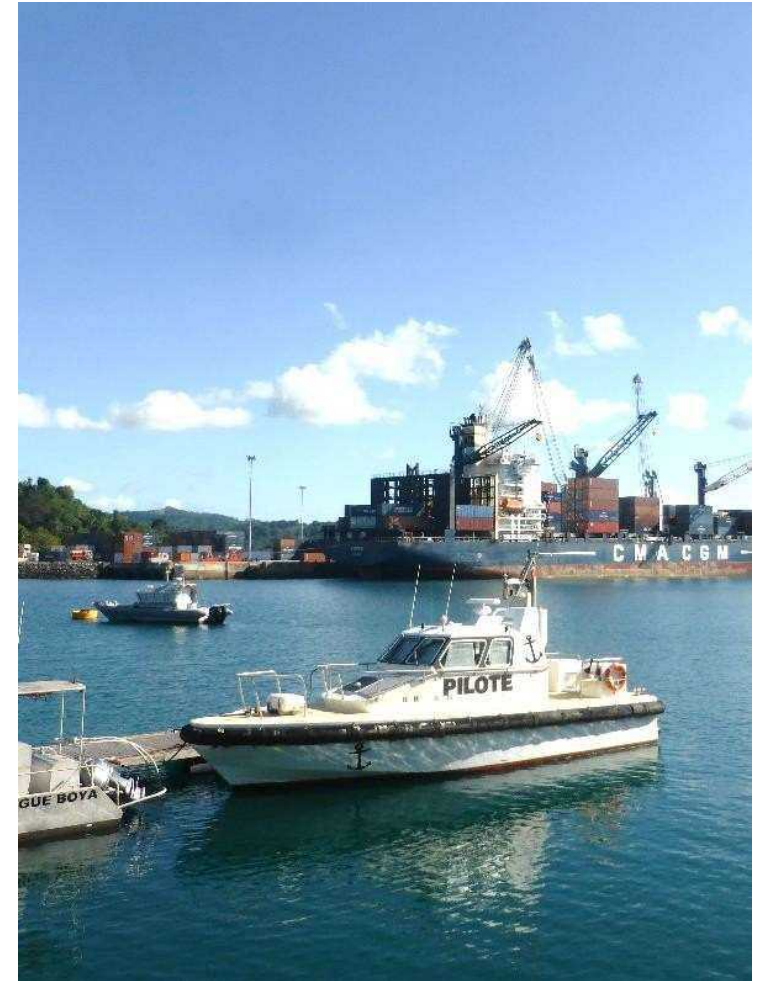
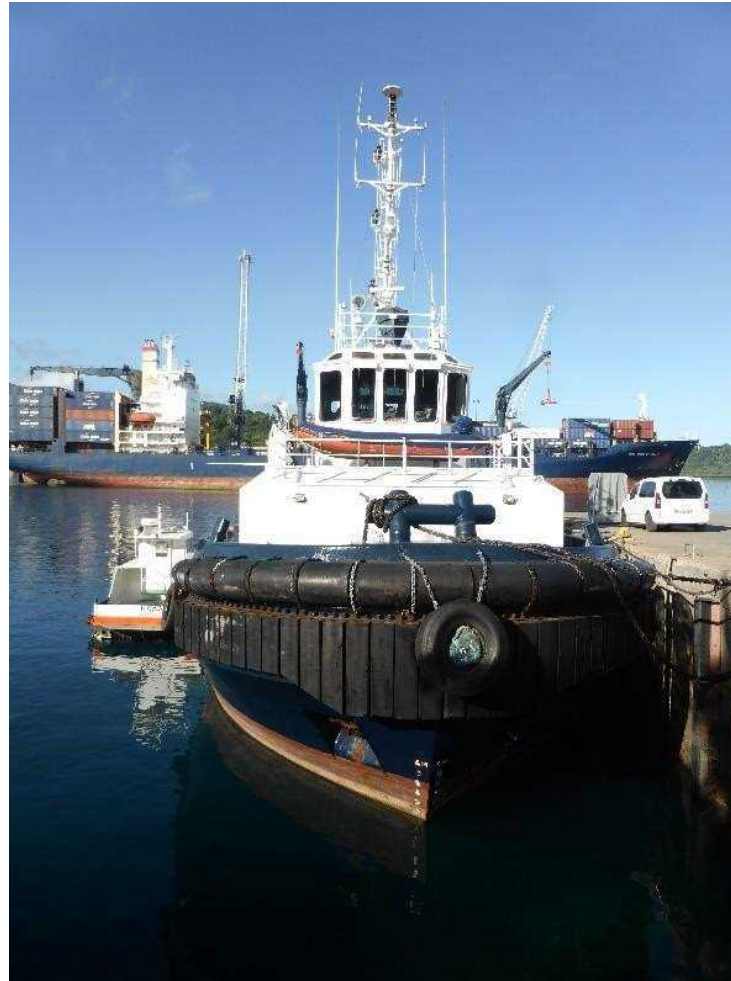
2 vessels

2250 CV / 26 tons

3040 CV / 42 tons

**MOORING BOATS**

2 boats

**SHIP AGENCY BY MANUPORT/RSM**





#### MAYOTTE CHANNEL GATEWAY SAS

PORT DE LONGONI BP 553 -  
KAWENI 97600 MAMOUDZOU  
TEL : 0269 62 15 45  
FAX : 0269 62 15 50  
[www.channel-gateway.yt](http://www.channel-gateway.yt)  
Operations NAHUM:  
[ndaroussi@channel-gateway.yt](mailto:ndaroussi@channel-gateway.yt)



#### MANU-PORT SARL

PORT DE LONGONI BP 159  
97600 MAMOUDZOU  
TEL : 0269 62 15 45  
FAX : 0269 62 15 50  
AMIR : [azaki@channel-gateway.yt](mailto:azaki@channel-gateway.yt)  
IDRISS : [izaidou@channel-gateway.yt](mailto:izaidou@channel-gateway.yt)



#### RSM MARITIME AGENCY

joint venture with  
MANU-PORT SARL  
MAGASIN 20 -PORT OUEST  
97420 Le PORT  
Dir. Line : 0692427887  
[monty-rsm@wanadoo.fr](mailto:monty-rsm@wanadoo.fr)